

Laramide Aged Porphyry Cu-Mo-Au Potential

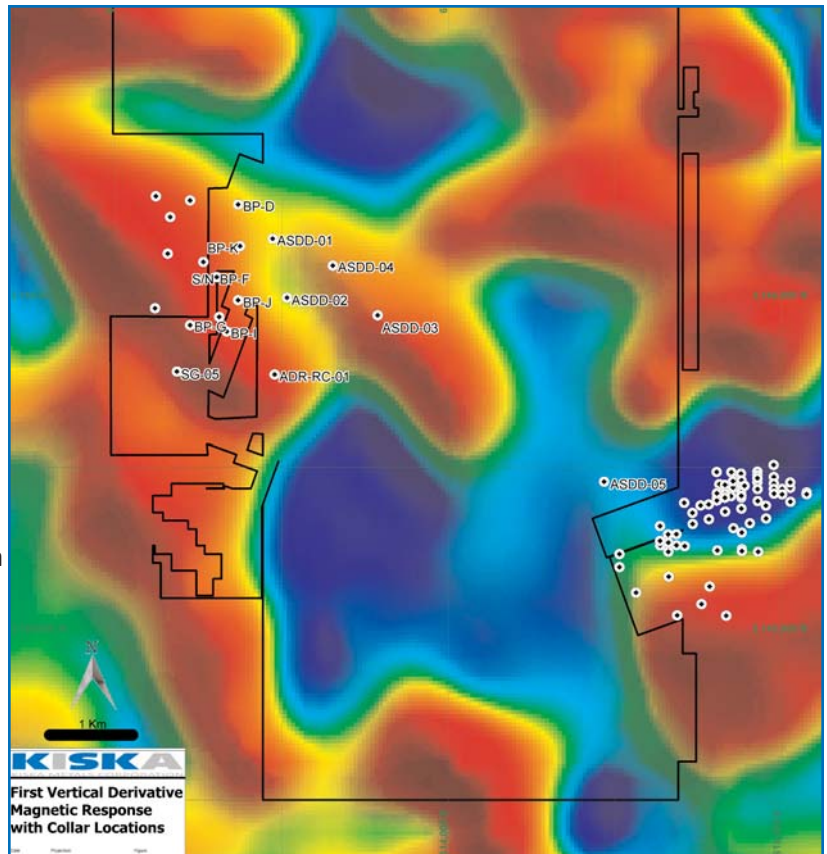
Suaqui Verde is one of seven projects held by Kiska within the Sonora porphyry Cu - Mo belt, host to the world class Cananea and La Caridad porphyry deposits. Located in the Suaqui Verde San Javier district, the project covers two copper mineralized systems, the Adriana porphyry centre on its western flank, and the probable extension to the Suaqui Verde copper oxide resource extension on its eastern margin. The central portion of the project covers a gravel and post mineral volcanic filled graben. Geology underlying the project consists of Cretaceous andesite volcanic centres intruded by Laramide age equivalent intrusive rocks including monzonites and quartz monzonites.

Wholly Owned

Suaqui Verde consists of 55km² of contiguous mineral tenure located 130km south east of Hermosillo, the capital of Sonora State, Mexico. Access to the project is by highway and secondary roads. The property is held 100% by Kiska Metals Corporation subject to a 2% NSR.

Exploration Highlights

- The Adriana target is an area measuring approximately 800m by 1000m where intense oxide stockworks and potassically altered andesites and quartz monzonites occur. The area is partially coincident with a greater than 1000ppm Cu soil anomaly. Limited drilling on the western limits of the target before encountering cover volcanics returned **95m @ 0.14% Cu and 0.03g/t Au from strongly biotite (potassic) altered andesitic volcanic and monzonite intrusive rocks.**
- Two large magnetic low targets located to the north and south of Adriana in cover rocks have not been explored. These targets measure 2km by 2km and 2km by 3km respectively.



- The eastern margin of the project is adjacent to the Suaqui Verde copper oxide resource where an untested 500m by 500m greater than 1000ppm Cu soil anomaly has been delineated.

Opportunity

Suaqui Verde covers two compelling copper porphyry targets exposed at surface and two large geophysical targets under cover rocks. The soil anomaly adjacent to the Suaqui Verde copper oxide resource has not been drill tested. Conducting gravity and IP surveys over the geophysical targets would quickly determine if the basement was within reach and if a chargeable mass of rock were present for drill testing. Much of the Adriana target has not been drill tested with nearly 1km between the two western most holes on the margin of the cover sequence. These holes have defined a vector from phyllic to potassic alteration and copper mineralization providing the necessary information to define the next drill test on this exciting, exposed porphyry system.

